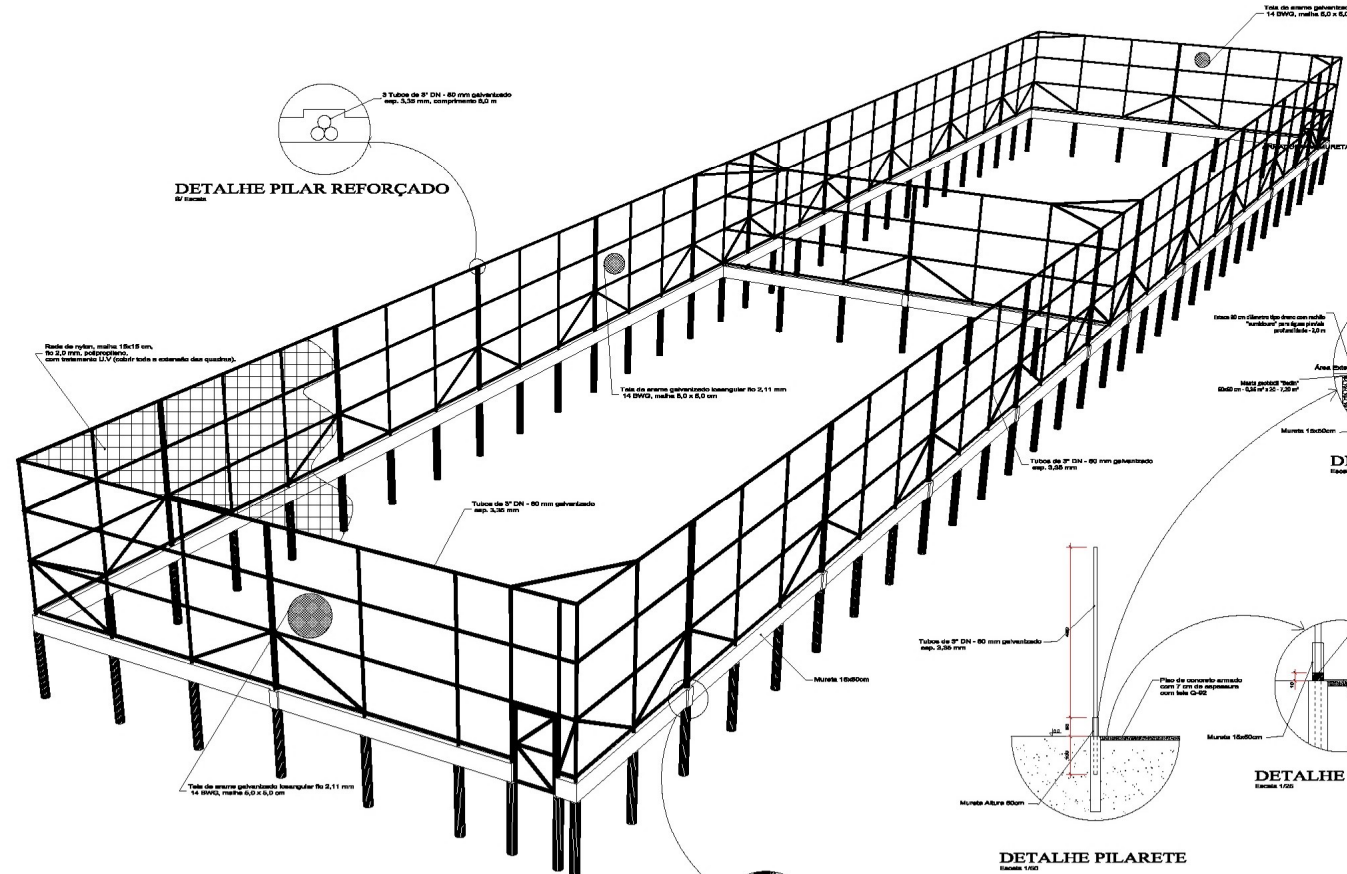
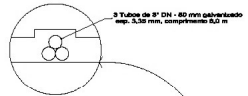


**PLANTA BAIXA**  
Escala 1/100



**PERSPECTIVA 1**  
Escala 1/50

**DETALHE PILAR REFORÇADO**  
Escala 1/50

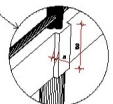


Rede de nylon, malha 15x15 cm, no 2,0 mm, polipropileno, com tratamento UV (proteger todo o exterior das quadras).

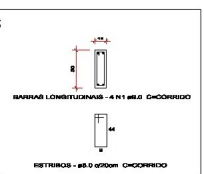
Tubo de arame galvanizado inoxidável no 2,11 mm 14 SWG, malha 6,0 x 6,0 cm

Tubo de Ø 2" DN - 80 mm galvanizado esp. 3,30 mm

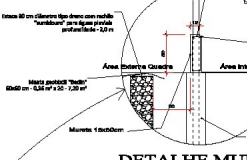
Tubo de arame galvanizado inoxidável no 2,11 mm 14 SWG, malha 6,0 x 6,0 cm



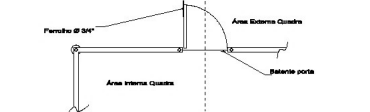
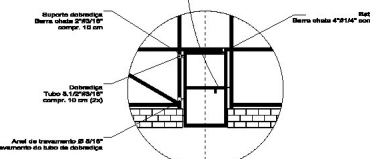
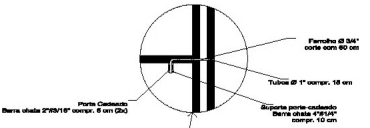
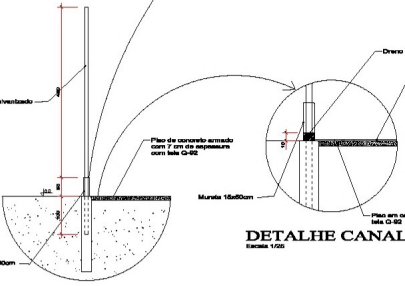
**DETALHE REQUADRO DO PILAR REFORÇADO**  
Escala 1/50



**DETALHE MURETA**  
Escala 1/50



**DETALHE CANALETA**  
Escala 1/50



**DETALHE GENÉRICO DAS PORTAS**  
Escala 1/50

- Outros abelhões para corrimão de tubulação acrílica
- Corrimão de mão - torneira e haste ajustável;
- Alça Ø 21 - 85 mm;
- Fio em polipropileno;
- Dimensões de fabricação;
- Tensão por estir. min. - 10.000;
- Faltas: listadas para detalhamento;

**DETALHE REQUADRO DO PILAR REFORÇADO**  
Escala 1/50